

## LANDSCAPE DEPARTMENT

### Robinsons History

Robinsons belongs to a group of companies, established since 1973, active in crop advisory and distribution of agricultural products.

Throughout the years, this group of companies supported the agricultural sector in Lebanon and expanded its services to Landscape Development in 1991.

# Landscape design

Hardscape or Softscape, we are affiliated to a group of architects who set high value on creativity and innovation, yet we are very keen on considering the concepts of our customers and the culture of the surroundings.

Our mission starts with an initial, on-site analysis where we carryout a comprehensive survey of the site taking detailed dimensions and levels as well as its functional needs.



We collaborate with our clients on their vision and build on that to achieve functional designs tailored to meet their requirements and to create memorable environments for people to enjoy. Whether our design is for private homeowners, shopping destinations, parks or resorts, our architects know how to create a landscape that elevates the overall experience of any destination. We, at Robinsons, challenge ourselves to make each project unique and enjoyable.



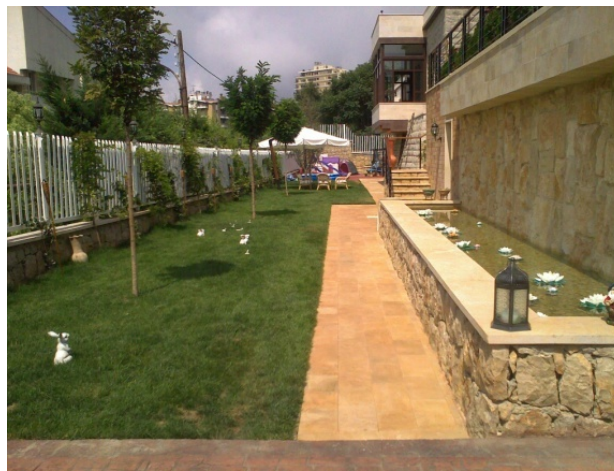
# Hardscape & Softscape installation

Designing a landscape is one thing, bringing that design into the sphere of reality is quite another. Robinsons will get any functional landscape plan into the ground at the required time.

We take pride in the skill of our installation team acquired through professional trainings and job experience.

Engineers, foremen, and skilled labors work against a very clear time table for every single project regardless of its simplicity or complexity.

Our team is equipped with the best tools and machinery available on the market to be able to perform the perfect job at the right time.







# Landscape maintenance

Maintaining a healthy, colorful landscape is no small achievement . Our team manages each site using the best known practices to maintain a healthy, green and colorful landscape meeting our clients expectations.

We handle every aspect of Landscape maintenance based on our wide experience in servicing resorts, retail centers, corporate campuses, public spaces, and private residences.





# Key executed projects - Byblos Sud Village

**Location:** Blat, Lebanon  
**Owner:** Tourism and Property Development S.A.L  
**Main Contractor:** Mouawad Edde S.A.L  
**Consultant:** Manasseh S.A.R.L  
**Scope of work:** Irrigation Design & Landscaping installation



# Key executed projects - Beirut City Center

Location: Hazmieh, Lebanon

Owner: Majed Al Futeim

Consultant: Samir Kheirallah & Partners

Scope of work: Irrigation Design & installation Soft Landscaping execution





# Key executed projects - Beit Misk Phase 1

Location: Beit Misk – Metn, Lebanon

Developer: EMAAR

Consultant: ERGA

Scope of work: Irrigation Design & installation Soft Landscaping execution





# Key executed projects – Four Seasons Hotel

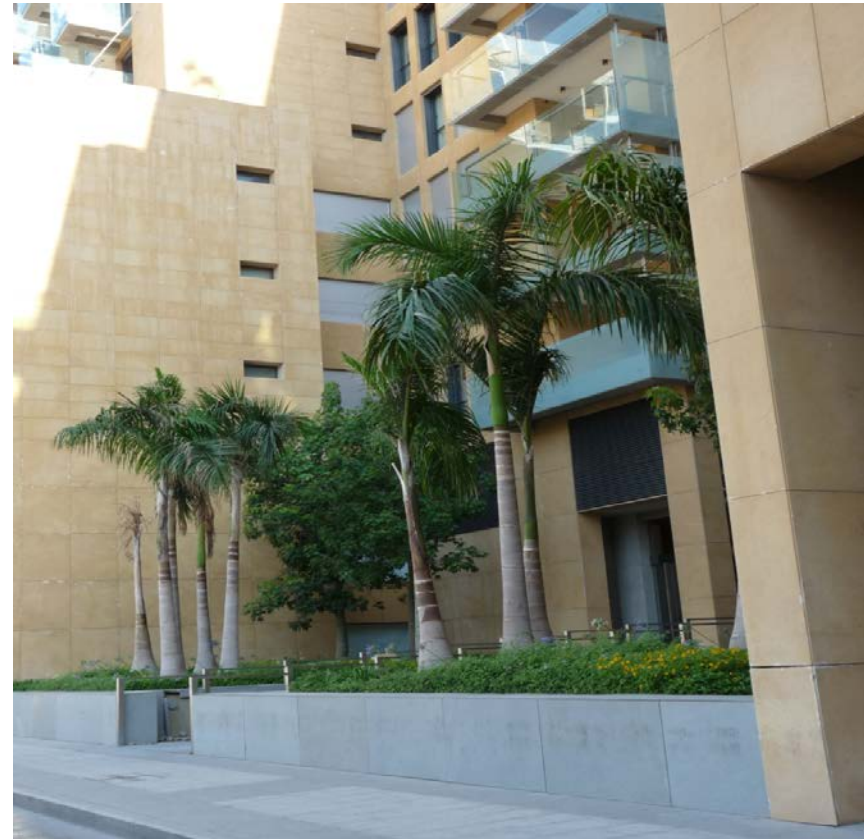
**Location:** Beirut, Lebanon.

**Owner:** Kingdom – Beirut S.A.L

**Main Contractor:** Mohammad Abdulmuhsin Al- Kharafi & sons W.L.L

**Consultant:** Dar Al- Handasah – Shair & Partners

**Scope of work:** Irrigation, landscape and hardscape Installation



# Key executed projects – Yas Island, Yacht Club Access Road

Location: Abu Dhabi, UAE.

Developer: Al DAR

Main Contractor: Nael & Bin Harmal Hydro export

Consultant: Halcrow

Scope of work: Irrigation, landscape and hardscape Installation





## Key executed projects – Emirates Palace Hotel

Location: Abu Dhabi - UAE

Main Contractor: Bloom Agricultural LLC

Scope of work: Indoor Plants



## Other Key executed projects - VIP Residences (Lebanon)

- Fawaz Residence, Abbasieh, Landscape & Irrigation
- Kharafi Residence, Sawfar, Landscape & Irrigation
- Michel Nadim Residence, Beit Merry, Landscape & Irrigation
- Romeo Semaan Residence, Meziara, Landscape & Irrigation
- Dr. Choukair Residence, Achkout, Landscape & Irrigation
- Naji Moussa Residence, Amchit, Landscape & Irrigation
- Residence Walid Baroudi, Faqra, Landscape & Irrigation
- Michel Nadim Private Garden, Daychounieh, Landscape & Irrigation
- Hazmieh 1452 Bldg. , Hazmieh, Landscape & Irrigation
- Farid Sleiman Residence, Amchit, Landscape & Irrigation
- Toutounji Residence, Jbeil, Landscape & Irrigation
- Zafer Sleiman, Jbeil, Landscape & Irrigation

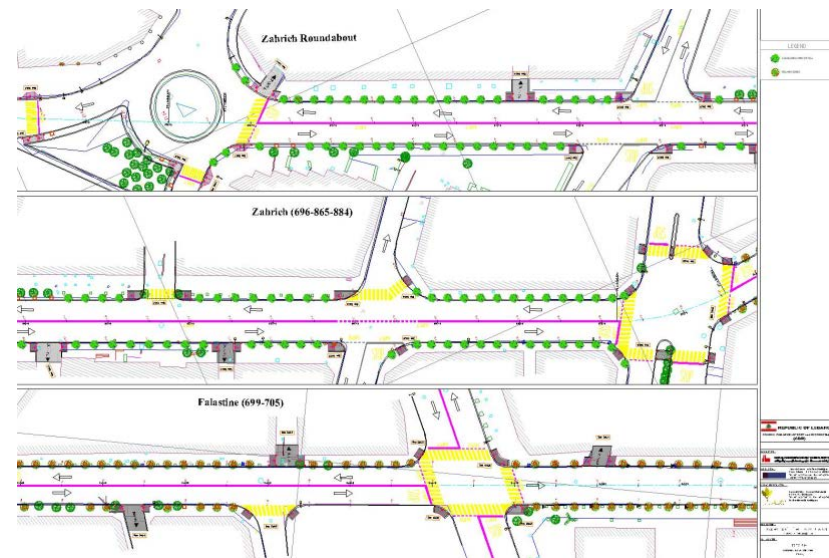
## Other Key executed projects - VIP Residences (UAE)

- Al Tayer Residence, Abu Dhabi, Landscape & Irrigation
- Ghantout Palace, Abu Dhabi, Landscape & Irrigation
- Residence in Khalifa City C, Abu Dhabi, Landscape & Irrigation
- VIP Residence, Abu Dhabi, Landscape & Irrigation
- Fghali Residence, Abu Dhabi, Landscape & Irrigation



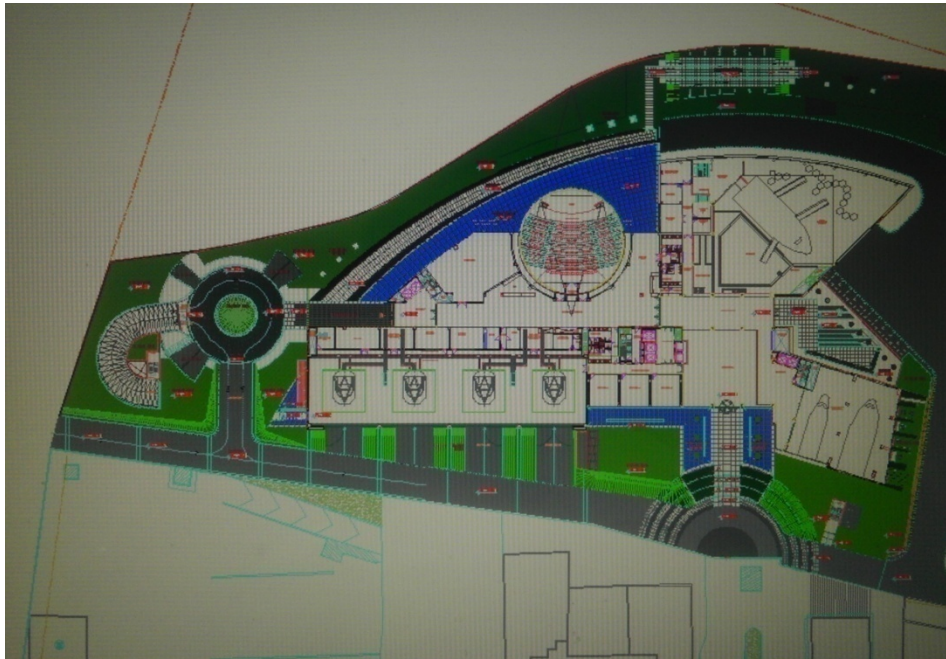
# Projects Under Execution – Tripoli Infrastructure Phase 1

Location:	Tripoli, Lebanon
Client:	CDR
Main Contractor:	BATCO
Consultant:	Dar Al Handassah
Scope of work:	Irrigation Design & installation Soft Landscaping execution



# Projects Under Execution – Middle East Airlines Training Center

**Location:** Beirut, Lebanon  
**Client:** M.E.A.  
**Main Contractor:** ABNIAH Engineering & Contracting  
**Consultant:** Khatib & Alami  
**Scope of work:** Soft Landscaping execution





## Projects Under Execution – Beit Misk Phase 2

Location: Beit Misk – Metn, Lebanon

Developer: EMAAR

Consultant: ERGA

Scope of work: Irrigation Design & installation Soft Landscaping execution.



# Projects Under Execution – Lebanon Water Front City Phase 1

Location: Dbayeh, Lebanon

Client: Majed Al Futeim

Scope of work: Soft Landscape and Irrigation





## Landscape Maintenance (Lebanon)

- Beitmisk, Aatchaneh, Lebanon
- Oceana Beach Resort, Damour, Lebanon
- Beirut City Center, Hazmyeh, Lebanon
- Byblos Sud Village, Jbeil, Lebanon
- Tripoli City Upgrading, Tripoli and Al Mina, Lebanon
- Private Residences, Keserouan and Jbeil, Lebanon